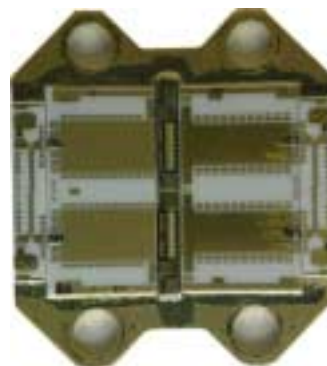


### 5.9 – 6.4 GHz 39 dBm Power Module

#### FEATURES

- P<sub>1</sub> dB: 39 dBm
- Small Signal Gain: 9 dB
- IP3: 47 dBm
- Bias Condition: 2400 mA @ 9 V



#### ELECTRICAL SPECIFICATIONS (Ta = 25 °C)

SYMBOL	DESCRIPTION	MIN	TYP	MAX	UNITS
<b>FREQ</b>	Frequency Range	5.9		6.4	GHz
<b>SSG</b>	Small Signal Gain	8	9		dB
<b>GOF</b>	SSG Flatness		± 0.4	± 0.5	dB
<b>P<sub>1</sub> dB</b>	Output Power at 1 dB Gain Compression	38	39		dBm
<b>IP3</b>	Third Order Intercept Point	46	47		dBm
<b>VSWR, IN</b>	Input VSWR		1.5:1	1.8:1	-
<b>VSWR, OUT</b>	Output VSWR		1.5:1	1.8:1	-
<b>VDC</b>	Supply Voltage		9		Volt
<b>Vg</b>	Gate Voltage	-1.2	-0.8	-0.4	Volt
<b>IDC</b>	Current Supply		2400	2500	mA

**CARRIER: S33 / Z33**